

**Rink Blaster X Model Assembly Instructions**



\*For all orders: The rubber blade is attached at the factory for your convenience.

\*For single unit orders: The X bracket and both handle braces are attached at the Factory. You will only need to fasten the handle to the blade assembly.

**Required Tools:**

- Two 7/16" wrenches or sockets to tighten the ¼-20 nuts and bolts. *Please wear work gloves to protect your knuckles from contacting other bolts and nuts on the unit in case your wrenches slip!*
- If you are not sure how tight the nuts should be, use a torque wrench 0 -25 lb.-ft range approx.

**Components Kit:**

**Quantity:**

- X bracket 1
- ¼-20 x ½" Hex Bolt and nuts 8
- ¼-20 x 2" Hex Bolt and nut 1
- Square U bolt and nuts 1



**TORQUE SPECIFICATIONS for the ¼ - 20 nuts on the U-Bolt and 2" center bolt: 5 lbf-ft (24bf-in) (2.7 N-m).**

**This is very slight pressure! Periodically check the tightness of U bolt, 2" bolt, and all other fasteners.**

**Step 1: Assemble X bracket and front and rear braces to blade. Finger Tighten only.**



**Step 2: Insert the U-Bolt into the brace with the label. Attach 2 nuts finger tight.**

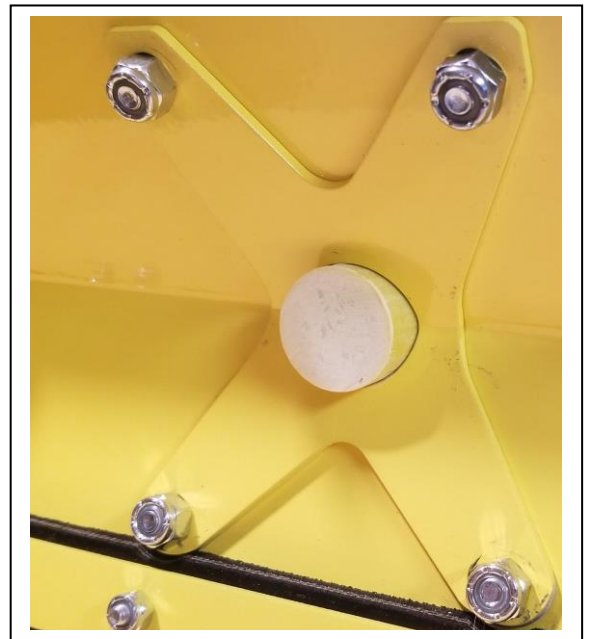


**Step 3: Assemble the handle to the Rink Blaster and tighten 2" bolt finger tight**

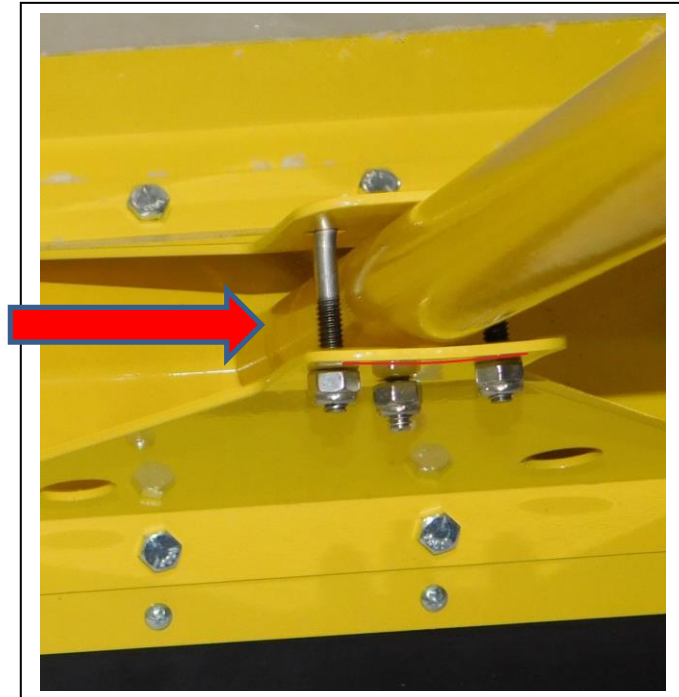
INSERT BOTTOM STUB OF HANDLE INTO THE HOLE IN THE HANDLE AND X BRACKET.

TIGHTEN THE EIGHT ¼-20 x ½" HEX BOLTS AND NUTS STARTING WITH THE FOUR ON THE X BRACKET.

THIS SETS THE ALIGNMENT OF THE X BRACKET, MAIN BLADE, AND THE HANDLE STUB.



**Step 4: Lock handle in place with 2" bolt and nut. The handle core is solid at this end. Even so, do not overtighten U bolt and or 2" bolt. Tighten the U bolt until a small crease forms in the braces as shown in the photo. Tighten the 2" bolt.**



**END**