

Stainless Steel Mini Rink Blaster II Assembly Instructions



Necessary tools: 1/8" or 3mm drill bit, 7/16" socket or fixed wrench or adjustable wrench, 1/4" nut driver/wrench.

1. Photo 1 Remove U Bolt and press handle firmly into socket.
2. Photo 2 Secure handle with U clamp and 2 nuts
3. Photo 3: Pilot hole: Drill 1/8" diameter hole 5/8" deep to accept self-tapping screw.
4. Photo 4: Install self-tapping screw and tighten with 1/4" nut driver.
5. Photo 5: **Your Mini Rink Blaster II is equipped with Bond Seal flexible washers to allow the bracket to flex to increase longevity.**
6. **Periodically check tightness of all fasteners. Do not over-tighten the Bond Seal flexible washers.**

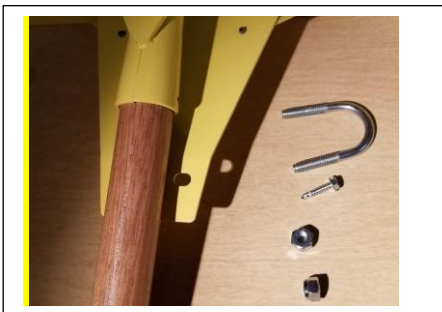


PHOTO 1

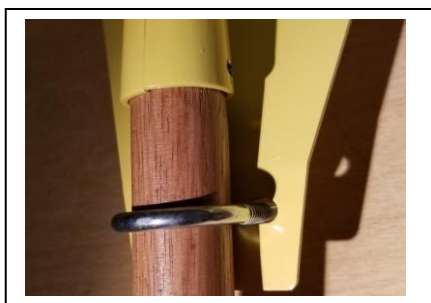


PHOTO 2



PHOTO 3

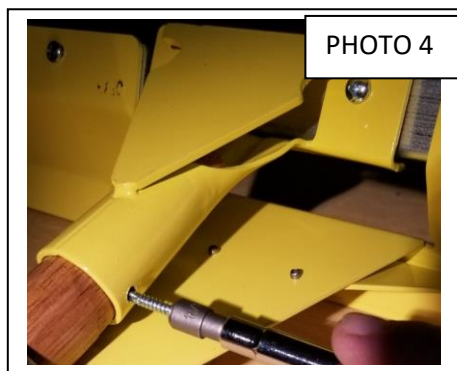


PHOTO 4

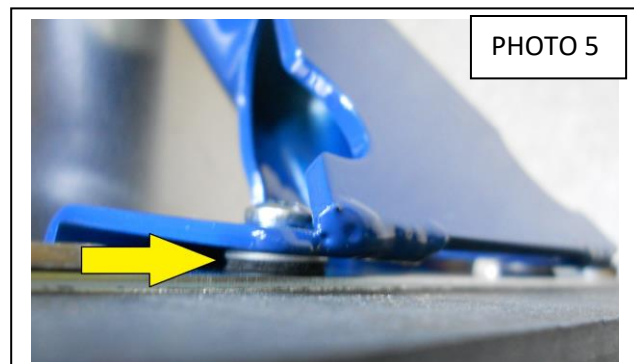


PHOTO 5